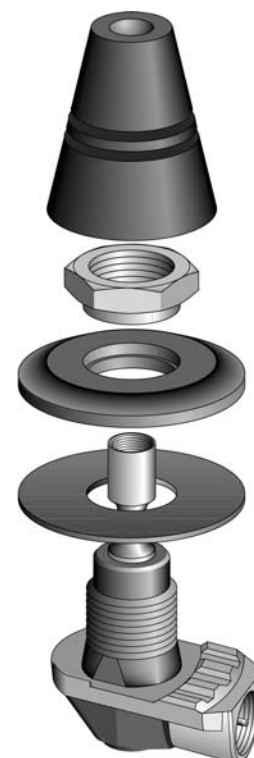


MODEL	SPECIFICATIONS
70/F	
MOUNT TYPE	Roof / wing mount with fixed cable * NON-CORROSIVE * TILTABLE (30 ° in all directions)
FREQUENCY	0-2500 MHz
IMPEDANCE	Nom. 50 Ohm
COLOUR	Black
DIMENSIONS	Ø 33 mm x 40 mm
HIGHT ABOVE ROOF	30 mm
MOUNTING-HOLE	Ø 13 mm (mounting from inside) Ø 19 mm (mounting from outside)
MATERIAL	ABS, POM, PE and brass
BUILD-IN DEPTH	10 mm



CONNECTION TO ANTENNA WHIP	M5
CABLE / CONNECTOR	70/F-3 3m RG58C/U cable 70/F-3 + NI-105 3m RG58C/U cable (incl. FME) 70/F-5 5m RG58C/U cable 70/F-5 + NI-105 5m RG58C/U cable (incl. FME)

