

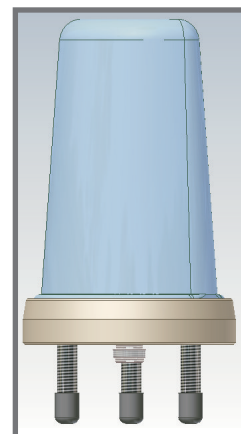
## Type n° T-BP600

### LOW PROFILE ANTENNA UHF / GPS / WIRELESS LAN

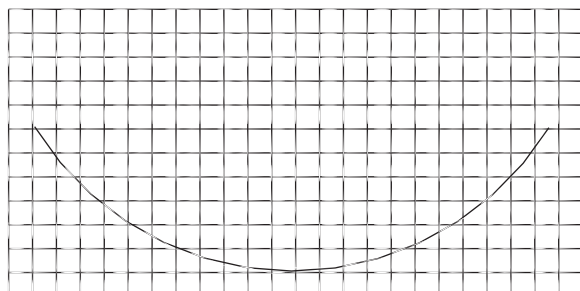
#### SPECIFICATIONS

**Material:**

Base:	Aluminium alloy EN AW-6082
Radome:	Polycarbonate
Net weight ( g ):	1000
Dimensions ( mm ):	106*160
Temperature ( °C ):	-40° - +80°
Mounting:	According to FEDERTRASPORTI 00104/5



V.S.W.R. CURVE

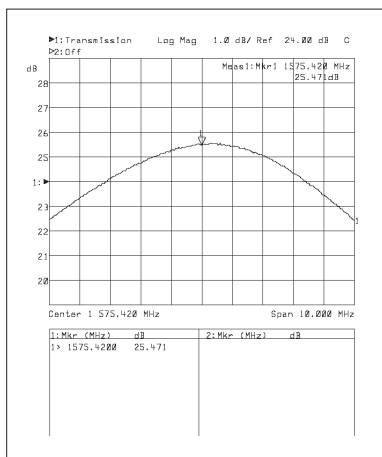


#### TECHNICAL DATA 400÷470 MHZ:

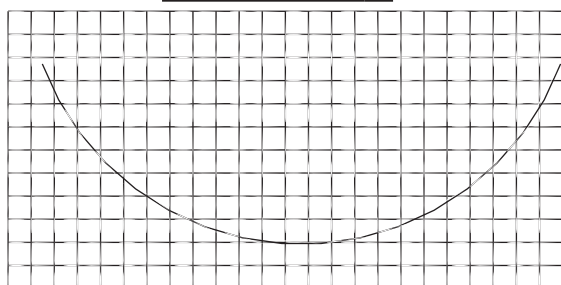
Frequency range:	400 ÷ 470 MHz
Impedance ( Ohms ):	50
Max power ( W ):	200
V.S.W.R.:	less than 1.5
Polarization:	Vertical
Emission:	Omnidirectional
Gain:	2.14 dBi over 1/4 l
Connector:	N Female

#### TECHNICAL DATA GPS:

Antenna type:	Active Planar Patch Antenna
Center frequency:	1575,42 MHz
Bandwidth:	± 1,023 MHz
V.S.W.R.:	less than 2.0
Impedance ( Ohms ):	50
Polarization:	RHCP
Current absorption:	20 ± 2 mA
Gain:	25 dB
Noise figure:	1.8 ÷ 2.2 dB
Supply voltage:	3 ÷ 5 V
Temperature ( °C ):	-30° - + 80°
Cable:	RG 174 mm.300±10 with FAKRA; capacity: 100pF/m



WIRELESS LAN CURVE



#### TECHNICAL DATA WIRELESS LAN:

Frequency range:	2400÷2485 MHz
V.S.W.R.:	less than 1.7
Polarization:	Vertical
Max power ( W ):	10
Impedance ( Ohms ):	50
Gain:	2.14 dBi over 1/4 l
Cable:	RG 174 mm.220±10 with SMA/M; capacity: 100pF/m