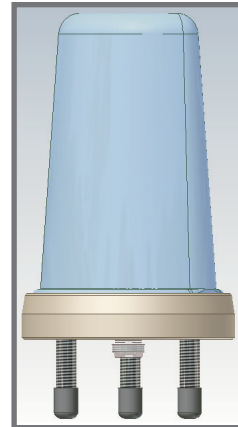


Type n° T-BP605

LOW PROFILE ANTENNA UHF: 400 ÷ 470 MHz



SPECIFICATIONS

Material:

Base:	Aluminium alloy EN AW-6082
Radome:	Polycarbonate
Net weight (g):	1000
Dimensions (mm):	106*160
Temperature (°C):	-40° - +80°
Mounting:	According to FEDERTRASPORTI 00104/5

TECHNICAL DATA 400÷470 MHz:

Frequency range:	400 ÷ 470 MHz
Impedance (Ohms):	50
Max power (W):	200
V.S.W.R.:	less than 1.5
Polarization:	Vertical
Emission:	Omnidirectional
Gain:	2.14 dBi over 1/4 l
Connector:	N Female

