

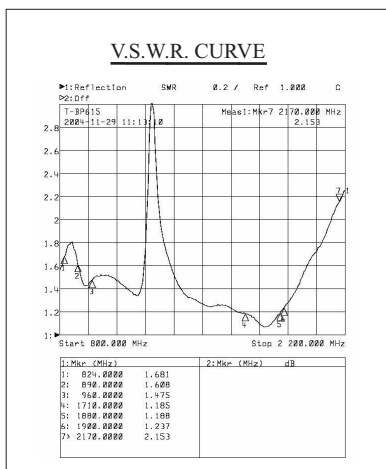
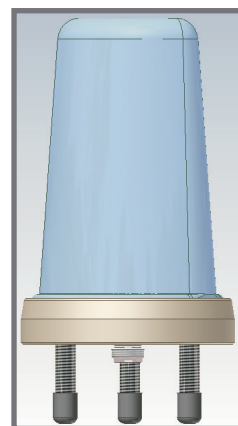
Type n° T-BP615

LOW PROFILE ANTENNA GSM / GPRS / UMTS / WIRELESS LAN

SPECIFICATIONS

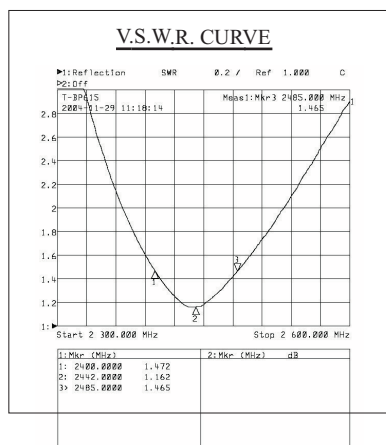
Material:

- Base: Aluminium alloy EN AW-6082
- Radome: Polycarbonate
- Net weight (g): 750
- Dimensions (mm): 106*160
- Temperature (°C): -40° - +80°
- Mounting: According to FEDERTRASPORTI 00104/5



TECHNICAL DATA GSM / GPRS / UMTS:

- Antenna type: 1/4 l Antenna
- Frequency range:
 - GSM / ETACS / NNT 824 ÷ 960 MHz
 - PCN / GSM 1710 ÷ 1880 MHz
 - GPRS 1900 MHz
 - UMTS 1900 ÷ 2170 MHz
- Impedance (Ohms): 50
- Max power (W): 100
- V.S.W.R.: less than 2.0
- Polarization: Vertical
- Emission: Omnidirectional
- Gain: 2.14 dBi over 1/4 l
- Connector: N Female



TECHNICAL DATA WIRELESS LAN:

- Antenna type: 5/8 l Antenna
- Frequency range: 2400 ÷ 2485 MHz
- Impedance (Ohms): 50
- Max power (W): 10
- V.S.W.R.: less than 2.0
- Polarization: Vertical
- Emission: Omnidirectional
- Gain: 5.0 dBi
- Connector: TNC M.