

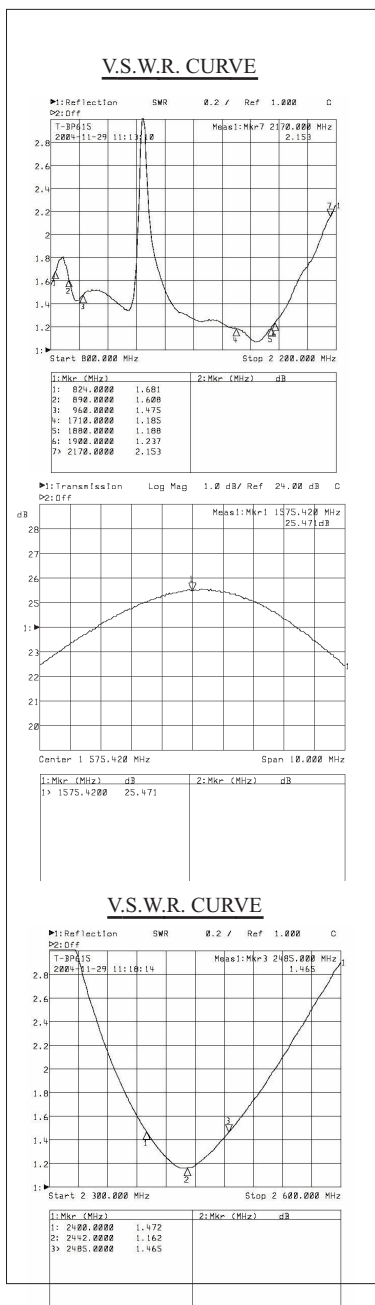
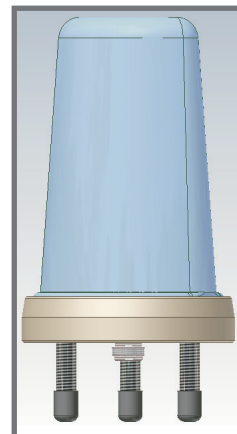
# Type n° T-BP620

LOW PROFILE ANTENNA GSM / GPRS / UMTS / WIRELESS LAN / GPS

## SPECIFICATIONS

**Material:**

- Base: Aluminium alloy EN AW-6082
- Radome: Polycarbonate
- Net weight ( g ): 850
- Dimensions ( mm ): 106\*160
- Temperature ( °C ): -40° - +80°
- Mounting: According to FEDERTRASPORTI 00104/5



### TECHNICAL DATA GSM / GPRS / UMTS:

- Antenna type: 1/4 l Antenna
- Frequency range:
  - GSM / ETACS / NNT 824 ÷ 960 MHz
  - PCN / GSM 1710 ÷ 1880 MHz
  - GPRS 1900 MHz
  - UMTS 1900 ÷ 2170 MHz
- Impedance ( Ohms ): 50
- Max power ( W ): 100
- V.S.W.R.: less than 2.0
- Polarization: Vertical
- Emission: Omnidirectional
- Gain: 2.14 dBi over 1/4 l
- Connector: N Female

### TECHNICAL DATA GPS:

- Antenna type: Active Planar Patch Antenna
- Center frequency: 1575,42 MHz
- Bandwidth: ± 1,023 MHz
- V.S.W.R: less than 2.0
- Impedance ( Ohms ): 50
- Polarization: RHCP
- Current absorption: 20 ± 2 mA
- Gain: 25 dB
- Noise figure: 1.8 ÷ 2.2 dB
- Supply voltage: 3 ÷ 5 V
- Temperature ( °C ): -30° - + 80°
- Connector: SMA M.

### TECHNICAL DATA WIRELESS LAN:

- Antenna type: 5/8 l Antenna
- Frequency range: 2400 ÷ 2485 MHz
- Impedance ( Ohms ): 50
- Max power ( W ): 10
- V.S.W.R.: less than 2.0
- Polarization: Vertical
- Emission: Omnidirectional
- Gain: 5.0 dBi
- Connector: TNC M.